



12<sup>th</sup> October 2023

Term 4 Week 1

**From the desk of Ms 'O'**

## Show Day - 7<sup>th</sup> November

Welcome back everyone to the new term. It's the perfect time this week and over the up and coming long weekend for the children to get stuck in to working on their compulsory art and craft activities for Show Day!



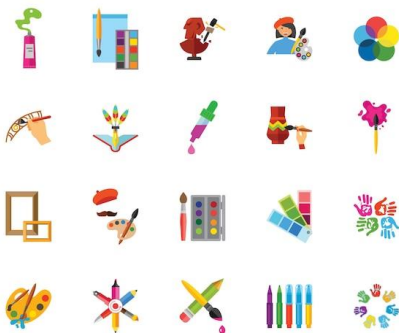
**Arts, Crafts and Baking Exhibits Judging – Monday, 6<sup>th</sup> November**

**Pet Judging, Wharenuī blessing/opening – Tuesday, 7<sup>th</sup> November.**

The programme for this special traditional country school event is on Page 4 for you to keep and refer to as the date draws closer. It will also be available for you to revisit in this newsletter which is on our website – [garston.school.nz](http://garston.school.nz).

The event is less than a month away so there is still plenty of time to speak to staff to clarify anything you may be unsure of.

### Arts and Crafts



### Baking



### Pets



## Arts, crafts and baking on Monday, 6<sup>th</sup> November

## Show Day on Tuesday, 7<sup>th</sup> November

We're delighted to be running this traditional - and enjoyable - event once again! Family and friends are all welcome and there will be lots of fun leading up to Show Day for every child, including those who can't bring a pet.

Teachers will explain how it will be run to children over the next few weeks. Please retain the information on these pages for future reference.

### On Show Day

The official start is 10am, but pets may be brought in earlier if you wish. Everyone including parents and children are invited for the whole day.

In the event of bad weather which prevents us having animals and activities outside, we will have a normal school day first. Then, after 12.30pm, parents and friends can come to school to view the Arts & Crafts displays and participate in the new building's opening ceremony when the children will also be performing.

### School Bus

Please note the school bus will only run on 7<sup>th</sup> November if required, as parents typically take their children home afterwards. So please let Graham know in advance if you need it (027 224 4047).

### Need more information?

Please ring your teacher if you want more information about how the day will be run.



## Judging Categories

### Years 4 – 7 will be judged under the following categories:

Section 1	Years 6, 7, 8
Section 2	Years 4 and 5
Arts & Crafts To be produced at school:	<ul style="list-style-type: none"> <li>• Adapted animal model and habitat</li> <li>• Self-portrait sketch</li> <li>• Waka model</li> <li>• Plasticine animals</li> <li>• Decorated cupcake (to be made at home then decorated at school)</li> <li>• Christmas treat "Bake Off" (recipe chosen at home and ingredients brought in to school. Children bake at school)</li> <li>• Handwriting sample</li> </ul>
Environmental (to be made at home)	<ul style="list-style-type: none"> <li>• <b>Compulsory</b> - Table centre piece/Flower arrangement</li> <li>• <b>Optional</b> - Any other art or craft (excluding Lego or blocks) e.g. drawing, painting, kitset models, woodwork, photography, sewing, origami, knitting</li> </ul>

### Years 1– 3 will be judged under the following categories:

Section 3	Years 3
Section 4	Years 1 and 2
Arts & Craft section (to be undertaken at school)	<ul style="list-style-type: none"> <li>• animal portrait</li> <li>• animal 3D newspaper sculpture</li> <li>• animal poem</li> <li>• sock puppet</li> <li>• animal animation</li> </ul>
Environmental (to be made at home)	<ul style="list-style-type: none"> <li>• animal miniature home/garden</li> </ul>

## Programme:

**Arts & Crafts** need to be brought to the school on **Monday 6<sup>th</sup> November**. Judging will take place after school. This is not open to anyone else, sorry.

### Show Day:

10.00 – 11.00	<ul style="list-style-type: none"> <li>• Children set up animals.</li> <li>• If the children are bringing a pet, they must have the things they need to ensure its safety and comfort (for example long lead, cage, bowl, bottle, food, water or milk etc)</li> </ul>
11.00 – 12.30	<ul style="list-style-type: none"> <li>• Judges speak to individual children about their animals.</li> <li>• Classrooms are open for everybody to view the results of Arts &amp; Craft judging. Exhibits can be removed after the official opening of the building.</li> </ul>
12.30 – 1.30	<ul style="list-style-type: none"> <li>• Pet parade and ribbon presentation.</li> <li>• Children station themselves with their pets around the central grassy area and each child who has a pet is invited to tell the audience something about them.</li> <li>• Pet judges award the ribbons for the junior and senior first, second, third places and the supreme champion.</li> </ul>
1.30 – 2.00	<ul style="list-style-type: none"> <li>• Opening of the Wharenui- everybody assembles near the deck of the new building. Afternoon tea will be offered to the adults and an ice-cream for the children.</li> <li>• Exhibits can be put into parent's vehicles and the children taken home after the official opening of the building.</li> </ul>

It would be much appreciated if parents available can help to pack up the arena at the end of the day. Thanks!



## School photos!

The date set for the annual school photos is this **Tuesday, 31st October**. That coincides with some families celebrating Halloween, but we ask that children DO NOT dress up in costumes or have face painting, as we'd like to preserve the tradition of a formal school photo.

There is no compulsion for parents to purchase photos but everyone will receive the proofs and pricing information in case you wish to place orders.

As well as every child present on that day being included in a group class photo there will be an individual photo. If for any reason you **do not want** an individual photo taken please let the school office know.

That is, ONLY those parents who wish to have a family photo (with siblings and/or parents) need to return the attached consent form to the school office by Tuesday morning. The consent form is also on Skool Loop for you to use if required.

No family photos will be taken without parental permission (see below).



### CONSENT FORM FOR FAMILY PHOTOGRAPHY

**Complete and return to school**

Family Name

.....

Children's Name

.....

Signed

.....



Kingston Community Association

# TRIVIA NIGHT

*Fundraising event for the Kingston Pump Track*

with quiz mistress Tori

**Tuesday 17th October**

**LOTS OF RAFFLES AND \$1000'S OF AWESOME AUCTION ITEMS UP FOR GRABS TO HELP US REACH OUR FUNDRAISING GOAL**

**\$60 per team of 4 (includes light supper)**  
**Register your team by emailing:**

**Doors open at: 06:30pm**  
**Quiz starts at: 07:00pm**  
**Kingston Golf Club**

[fundraising@kingstonca.org.nz](mailto:fundraising@kingstonca.org.nz) | Limited to 22 teams

## WE WOULD LOVE YOUR SUPPORT – CAN YOU HELP US?

Kingston is building its very own pump track! Say what?? It's true! The picturesque lakeside town of Kingston on the Whakatipu is building an accessible pump track for locals and visitors to enjoy, and we are seeking your help.

A multi-modal accessible pump track in Kingston benefits the lakeside community in numerous ways, promoting physical activity and outdoor recreation, and offering residents of all ages and abilities a safe and enjoyable multi-sport urban playground and space for cycling, skateboarding, wheel-chairing, and rollerblading, fostering a healthier lifestyle and an inclusive community cohesion.

The Kingston Community Association hopes that a pump track on the lakefront will serve as a social hub, encouraging interaction among residents and visitors, and creating a sense of belonging. It will become a venue for events and competitions, drawing visitors from nearby areas, thus boosting local tourism and businesses.

The KCA is seeking fundraising support from local businesses to help us build our track, and any assistance- no matter how large or small- from local businesses is gratefully appreciated. Your support demonstrates a commitment to community well-being, aligning with corporate social responsibility values, and contributing to a more active and vibrant community.

We're not asking for your money (though if you have some we won't say no either- ask us about sponsorship signage for the track), but we are asking for support in the form of a donation of your services and products to use as prizes for fundraising events such as quiz nights and raffles which we are conducting throughout the remainder of 2023. At the KCA, we're committing to this project with our own time and talent. Your support would make a tremendous impact, enhancing our project's success and fostering goodwill among residents. Let's collaborate to create an inclusive and active Kingston. Will you join us?

If you can please donate a voucher for your product, we will either auction or raffle these so that their true value is realised as a contribution towards our goal of \$150,000 to build our awesome track. We thank you for your consideration and support in helping us build a stronger, more vibrant, and inclusive community.