



1st December 2022

Term 4 Week 7

## From the desk of Ms 'O'

### ATTENDANCE MATTERS

Excerpts from a MoE publication:

As of August 22<sup>nd</sup>, associate education minister Jan Tinetti joined pupils, teachers, parents and principals to help launch a nationwide school attendance campaign called Every School Day is a Big Day.

The MoE believe parents can sometimes forget how significant schools are for tamariki. At school there is learning, fun and memorable moments, friends and teachers, sports, games, culture, and more. All of which is important for tamariki to involve themselves in.

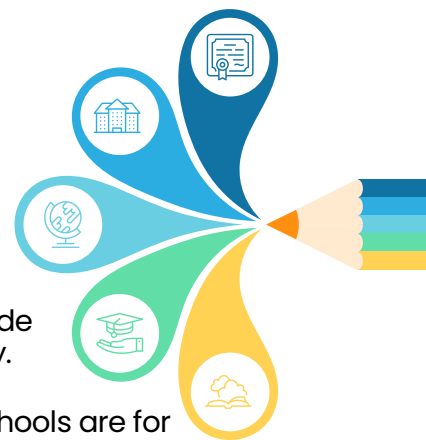
Going to school regularly is how kids learn. It means that they will be better able to pass exams and get qualifications – that's obviously important. But being at school also helps children and young people develop in other important ways. It strengthens their social, cultural and mental well-being. Attending school means that these young people will grow up having more choices.

We know that the majority of parents take the responsibility for making sure their children attend school every day very seriously. However, school attendance has gradually decreased across Aotearoa schools since 2015 and has continued even more due to COVID. Only around three in five children attend school regularly and only 5% of kiwis believed attendance was critical, which was also seen as an issue by the ministry.

A student is considered to have been attending regularly if they were present for more than 90% of a term (to allow for unavoidable absences) however a recommended attendance target is 95%.

You will find a record of your children's attendance on the bottom of their school report. I ask you please to consider if their attendance figures need to be improved to be more in line with MoE expectations.

As always, our teachers are always willing to discuss with you matters relating to the important matter of your child having regular attendance.



## Kingston Flyer Trip

It was enjoyable spending the day as a school group, riding the Kingston Flyer and then playing together down at the park.

As well as the train experience a personal stand-out feature of the day was the children's excellent behaviour. They were at all times respectful and co-operative and a pleasure to be with.

Thanks to the Garston Home & School who heavily subsidised the excursion and even spoil us with an ice-cream.



Morning Tea at Fairlight station, where the engine turned around to pull us home again. We had two private second class carriages for our entire school. It was a fantastic trip and the children had lots of fun!

## Community News and Reminders

### **URGENT**

It has been brought to our attention that there have been unacceptable comments made using our SchoolDocs policy review function that had nothing to do with policy.

This feature is only to be used for making constructive comments on a policy that is up for review. If you have a complaint then please follow the correct procedure which is firstly to contact the class teacher to discuss the issue or the principal if a matter remains a concern.

For this reason, the password has been changed to give you access to the SchoolDocs website. Should you require this password then please call the school office for it.

### **Athol Bus**

The morning bus stop for the Athol children is outside the Athol fire station, *not the shop.*

### **Stationery Accounts**

Some of you will have a stationery account in your child's bag. Please pay these as soon as possible. Thank you.



**HOLIDAY PROGRAMME**  
presented by Active Southland

JOIN US!  
This programme offers a fun and active holiday for children aged 5-12 years. It includes a variety of activities, including sports, games, and outdoor adventures.

GET #ACTIVEAS WITH OUR #FUNAS HOLIDAY PROGRAMME

For tamariki aged 5-12 years | 10am-3pm | \$6 per child

19TH JAN MYNDHAM	20TH JAN YONAHUI	23RD JAN TE ANAU	24TH JAN LUNSDEN
26TH JAN HAKURUA	27TH JAN REVERTON	30TH JAN WINTON	31ST JAN STAUTRU

Free buses will run to support tamariki from neighbouring communities

**BOOK ONLINE TODAY**  
[www.activesouthland.co.nz/events](http://www.activesouthland.co.nz/events)

Registrations close Wednesday 11th January 2023 at 12pm

Active Southland



## Dates for your Diary



### 9<sup>th</sup> December 2022

Let Bernie know if you can help move the piano from the container to the new building on 14<sup>th</sup> December after the Christmas Concert.



### 5<sup>th</sup> – 9<sup>th</sup> December 2022

Active Southland Trailer based at school all week, with a range of fun sports and activities



### 12<sup>th</sup> December 2022

Shared lunch for children to farewell Mrs Soper – please send in some extra treats for both classes to share.

Secret Santa

End of Year reports sent home



### 13<sup>th</sup> December 2022

End of Year Concert and Prize Giving

Last day of term for 2022!



### 31<sup>st</sup> January 2023

First day of the new school year